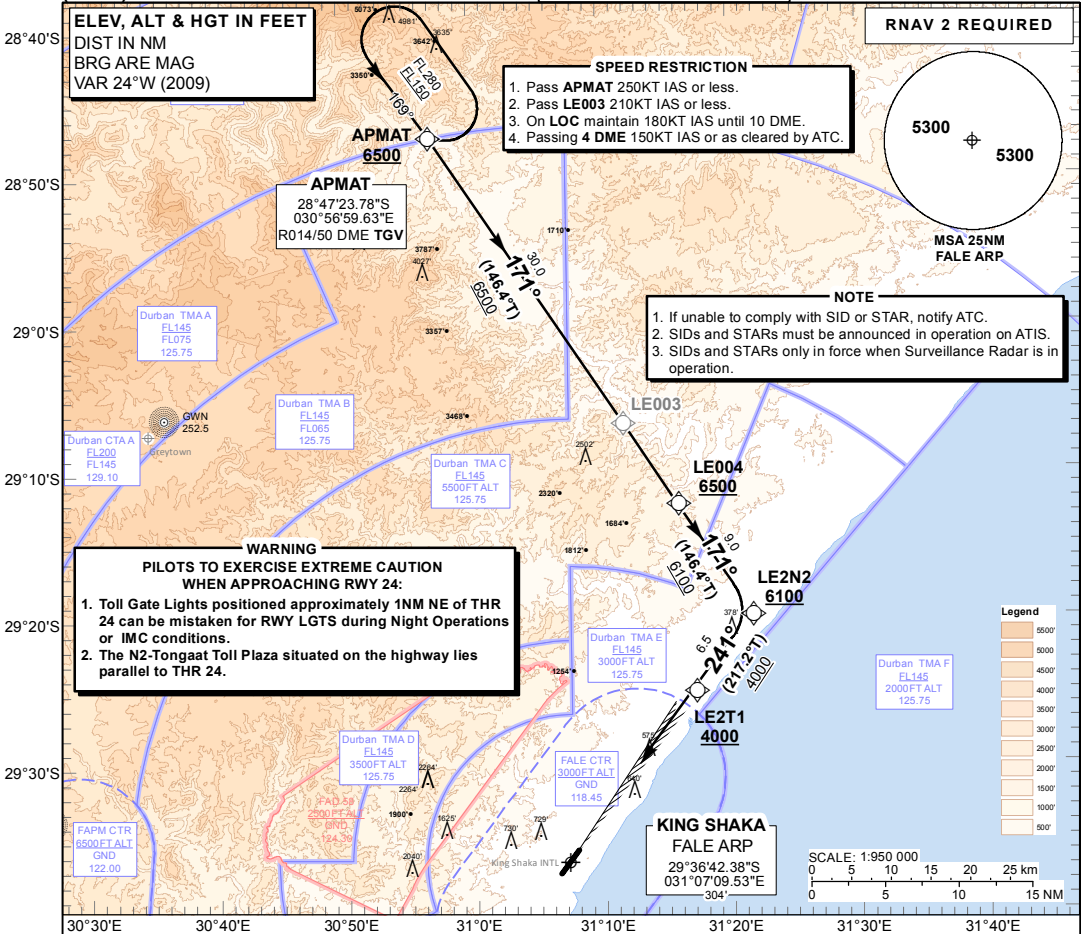


**STANDARD ARRIVAL  
CHART -  
INSTRUMENT  
(STAR)**

TRANSITIONAL ALTITUDE  
**5500'**  
TRANSITIONAL LEVEL  
ATC

RADAR APP: 125.75  
TWR: 118.45  
GND: 121.65  
ATIS: 127.00

**DURBAN**  
(KING SHAKA INTERNATIONAL)  
**RNAV (GNSS) RWY 24**  
APMAT 1B



**APMAT 1B:  
RWY 24**

Leave APMAT for LE004. At LE004 proceed to LE2N2. At LE2N2 turn right to LE2T1 and intercept the ILS LOC RWY 24.

**COMMUNICATION FAILURE PROCEDURE (Squawk 7600)**

**Before APMAT:** Proceed to APMAT and enter the APMAT RNAV (GNSS) hold. Hold at last assigned level, for minimum 5 MIN, then descend to FL130 in the hold or maintain last assigned level if below FL130. Leave APMAT on the "After APMAT" Communication Failure Procedure.

**After APMAT:** Continue on the APMAT 1B RNAV (GNSS) STAR maintaining last assigned level. At LE003 descend to FL080 and proceed to LE004. At LE004 (not below 6500' ALT) proceed to LE2N2. At LE2N2 (not below 6100' ALT) turn right to LE2T1 and continue with the RNAV (GNSS) RWY 24 APCH and intercept the ILS LOC RWY 24 and land RWY 24.

In the event of a missed approach with the intention of diverting to an alternate aerodrome, proceed as follows: Comply with the OKTAN 1A RNAV (GNSS) SID. At OKTAN continue to the diversion aerodrome.

CHANGE: Background - Obstacle update